

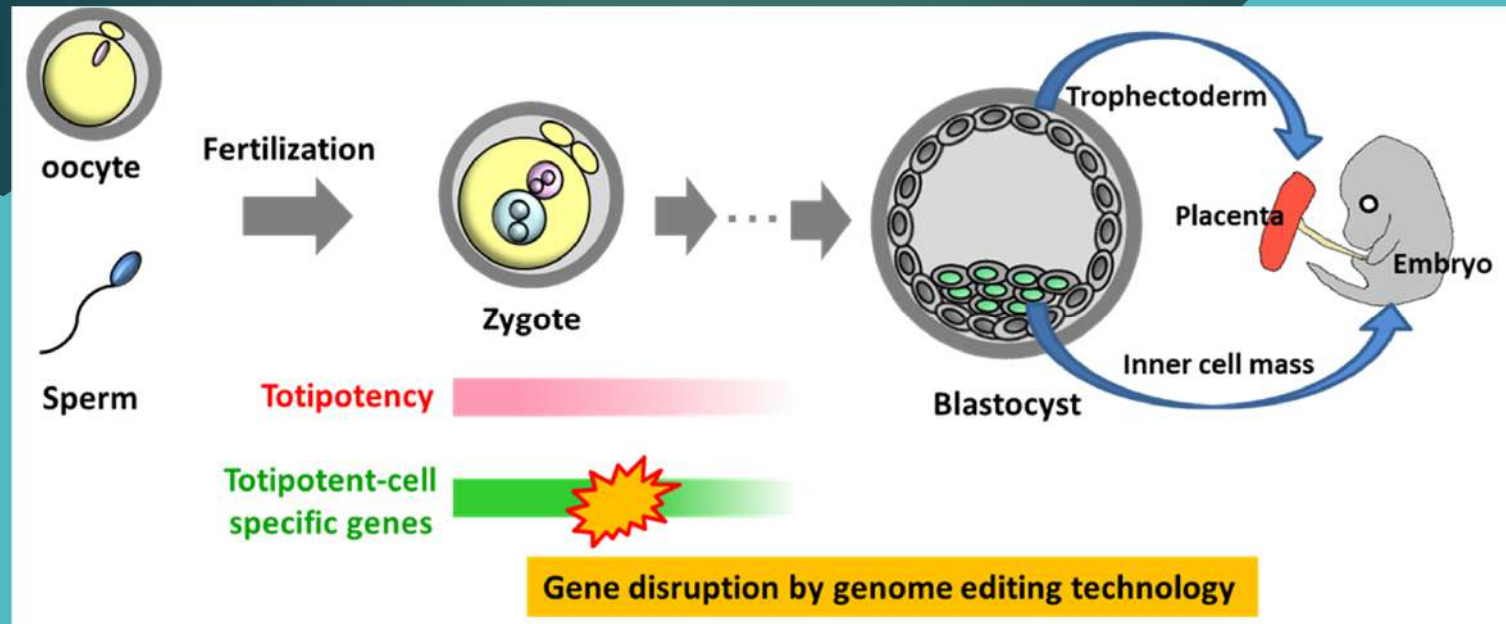
# Animal division



Toshinobu Nakamura (PhD, professor)

Research area: Stem cells biology, Germ cell biology

Research interests: : Elucidation of the mechanism underlying acquisition of totipotency



Early preimplantation embryos have the ability to differentiate into both fetus and placenta, which is called **"totipotency"**. We aim to elucidate the molecular mechanisms by which zygote acquire totipotency through gene disruption analysis of genes that are specifically expressed in totipotent early preimplantation embryos.